

MCL-R/3 BRIDGE

SAP FOR ENTERPRISE MOBILE WORKERS



FEATURES

Tailored User Interfaces

MCL-R/3 Bridge lets you create mobile user interfaces that display only the specific fields for your mobile worker's given task.

Local Validations

MCL-R/3 Bridge lets you create and build rules that are executed and validated on the mobile computer, allowing you to easily handle operational situations not handled by SAP.

Support for all MCL Enabled Mobile Computers

MCL-R/3 Bridge provides the same interface to SAP regardless of the mobile computer features and form factor.

Integrate your mobile worker applications with any ODBC database or host application — BackOffice, Warehouse Management System, Enterprise Resource Planning System. Mobilize your SAP shop floor workers to increase their productivity and your business data integrity.

MCL-R/3 Bridge

Does SAP® R/3® drive your “shop-floor” operations — retail, warehouse, distribution, manufacturing, or transportation and logistics?

Do you want to improve your shop-floor worker productivity?

Do you want to improve your shop-floor related SAP data integrity?

Do you want to control your mobile worker application interface to SAP?

If you answered “yes” to these questions, you need MCL-Collection and MCL-R/3 Bridge. These high-productivity, fully integrated software products are essential to mobilizing your workers and interfacing their activities right from the shop-floor, point of activity, directly into SAP.

SAP for Mobile Workers

MCL-R/3 Bridge delivers SAP to mobile computers allowing you to process any SAP R/3 transaction for any SAP solution:

- Financials
- Human Resources
- Customer Relationship Management
- Supplier Relationship Management
- Product Lifecycle Management
- Supply Chain Management
- Business Intelligence

MCL-R/3 Bridge is extremely flexible.

It can present a mobile user interface for any operation that uses a standard SAP Interface protocol:

- Remote Function Call (RFC)
- Intermediate Document (IDOC)
- Business Application Programming Interface (BAPI)

How Does it Work?

MCL-R/3 Bridge is a component of the MCL-Collection. Consequently, in addition to its own capabilities, it brings all the benefits of MCL-Collection to your SAP mobile workforce deployment.

MCL-R/3 Bridge consists of two main parts:

1. Intuitive, graphical R/3 functional add-on to MCL-Designer to:
 - Develop scripts to customize MCL-R/3 Bridge for your mobile SAP environment
 - Create transaction handling rules for MCL-R/3 Bridge
 - Develop ERP functionality and rules for your MCL mobile worker applications
2. Server component used in your live operational deployment to:
 - Execute the rules and scripts you create using MCL-Designer
 - Handle, route, and guarantee delivery of messages
 - Package SAP transactions into mobile computer data transactions and vice versa



End-to-End Integration

Use MCL-R/3 Bridge to create an unbroken link between SAP and shop-floor equipment, such as scales, intelligent sensors, PLCs and others.

Mix-and-match technologies such as barcode scanning, RFID, speech recognition and more while maintaining full conformity with SAP standards.

Modular Architecture

MCL-Collection and MCL-R/3 Bridge allow you to interface with your SAP environment with many modes of communication:

- Real-time and batch communications
- Continuously and casually connected states
- WLAN, WWAN and wired communications environments

Multiple SAP Transactions from a Single Entry

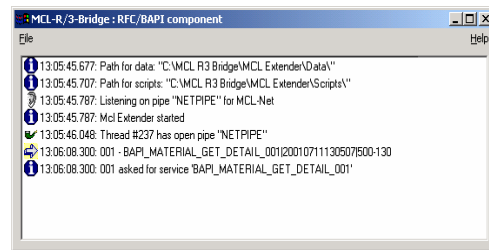
MCL-R/3 Bridge's controlled propagation of a single transaction ensures your complete SAP data integrity.

Multiple Systems Updates from a Single Entry

MCL-R/3 Bridge's automatic posting of a single transaction to multiple systems ensures system coherency and data integrity across your entire enterprise.

Unlike middleware, MCL-R/3 Bridge does not modify the contents of your transactions. Its function can rather be compared to that of a postmaster — enveloping, handling, routing, and guaranteeing delivery of your transactions to and from mobile computers and your SAP system.

SAP certified, MCL-R/3 Bridge "bridges" the gap between the practical requirements of your operating environment and the need to maintain the integrity of your SAP enterprise system.



Tailored User Interfaces

Shop-floor transaction entries do not usually require the fullness of SAP functionality as shown on standard SAP screens. Therefore, to focus your mobile workers' efforts on the essentials, MCL-R/3 Bridge lets you create mobile user interfaces that display just the fields — and only those fields — required for a given task. Furthermore, MCL-R/3 Bridge lets you present these fields in a sequence that reflects the logical workflow for the operation at hand including dynamically reacting to specific data entered by the operator.

Multiple Systems Updates from One Entry

MCL-Collection's architecture is a modular, layered approach. This means you can post a single shop-floor transaction to multiple systems — such as to SAP, Oracle, and a WMS — simultaneously.

For example, an SAP generated task can cause your mobile worker application to query your Oracle database. The mobile worker application can then update both your SAP and your Oracle systems with the resulting transaction.

Mobile Computer Support

MCL-Collection, and therefore MCL-R/3 Bridge, is cross-manufacturer, cross-platform compatible. Mix and match mobile computer populations and form factors to maximize worker productivity.

MCL-R/3 Bridge provides the same interface to SAP regardless of the mobile computer features and form factor.

Operator and System Driven Operations

Most SAP environments are system-driven environments. This means that SAP typically has the responsibility of assigning mobile worker tasks. However, occasionally, events requiring immediate operator action erupt on the shop-floor. MCL-R/3 Bridge's support of operator-driven operations allows you to handle these situations easily.



MCL-BRIDGE MINIMUM REQUIREMENTS

| Specification | Requirement (min/recommend) |
|---------------------------|---|
| Operating System | Windows XP Windows 2000 Windows 98 |
| Processor Speed (Mhz) | 233/300 133 or higher 486XD 66MHZ |
| RAM (MB) | 64/128 64 16/24 |
| Free Hard Disk Space (MB) | 80 80 80 |
| Display | 800/600 VGA or higher VGA or higher |

Copyright © 2008 MCL Technologies. All Rights Reserved

Microsoft, Windows, Windows XP, Windows 2000, and Windows 98 are trademarks or registered trademarks of Microsoft Corporation in the United States and/or other countries.

All other trademarks are the property of their respective owners. All specifications, terms and descriptions of products and services are subject to change without notice or recourse.

MCL Technologies

Chaussée de Bruxelles 572

1410 Waterloo • Belgium

Tel.: + 32 2 724 35 00

Fax: + 32 2 724 35 04

<http://www.mcl-collection.com>



Marketing@mcl-collection.com

Support@mcl-collection.com

Competence.USA@mcl-collection.com

Competence.UK@mcl-collection.com

Competence.NL@mcl-colleciton.com