

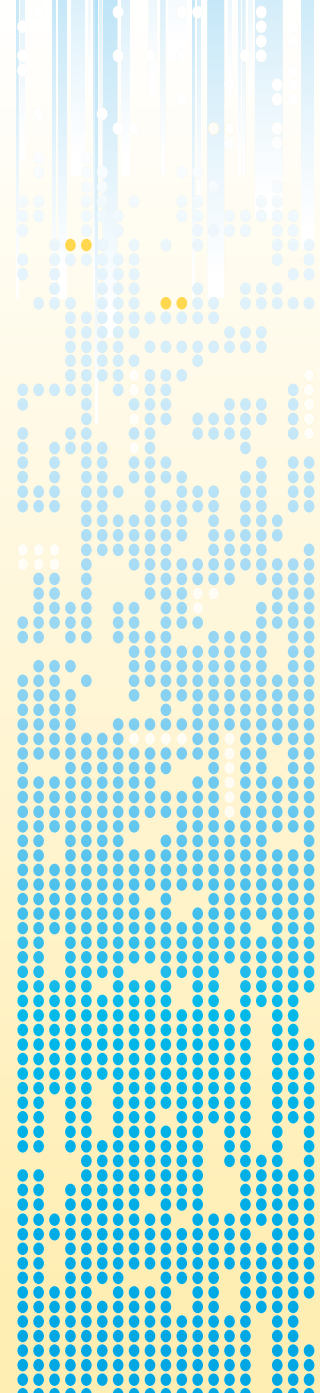


Medical Terminal (White) – Healthcare Assistant



The M3 White is the first slim size enterprise-grade mobile computer available with an anti-infection casing. Silver-Nano coated casing will provide you with years of reliable hassle-free operation while protecting medical environments from the spread of infection. Silver-nano technology allows the devices to be regularly serilized without degrading their housing and durability.

The M3 White will enhance medical productivity and the cost efficiency of medical IT operations everywhere in hospitals and clinics, including nursing stations, patient rooms, and NICUs.





The M3 White is designed for all health care application such as point-of-care, nursing station work and inventory control. With a slim and rugged design, the M3 white has the following key features:

- Built-in barcode reader (1D/2D)
- WLAN/Wifi for real time exchange of mission critical medical data
- Bluetooth for connectivity to a variety of peripherals, such as portable printers
- Colour camera for image taking
- Optional and integrated RFID 13.56Mhz reader for the handling of RFID based pharmaceutical SCM. Supports wand standard tag -ISO15693, ISO14443A & ISO14443B
- WAN(GPRS/Edge/3G) feature provides real-time, outside the four wall trace & tracking, for pharmaceutical supply chain management and home care service.

The M3 White is optimized for medical applications. It is both a rugged device with an IP65 rating and also has a slim and light design, even with the battery (320g).



M3 White Medical Terminal Specifications		
Operating system (OS)		Windows Mobile 5.0/6.1
Processor (CPU)		Bulverde PXA-270(624MHz)
Memory	RAM	128MB
	ROM	256MB (max 512MB)
Expansion Slot		Mini SD
Scanner		1D linear or 2D imager
Colour Camera	Resolution	2.0M Pixels
	Illumination	Flash
	Lens	Auto Focus
RFID Module		HF Module
	Frequency	13,56MHz
	Tags supported	ISO15693 / ISO14443A / ISO14443B
WWAN		3G+HSDPA
WLAN		IEEE 802.11b/g
WPAN		Class II, v1.2
GPS-enabled		SiRF star III
Display	Size	3.5"±, 240 x 320 colour TFT LCD, QVGA
	Colour	65,536 colour
	Type	Touchscreen, LED backlight, 140cd/m2
Dimensions (mm)		79W x 164H x 25D
Weight		320g including battery
Main battery		Rechargeable Lithium Ion 2200 mAh
Drop specification		1.5M
Environmental sealing		IP65
Operating temperature		-20° C to 50° C

